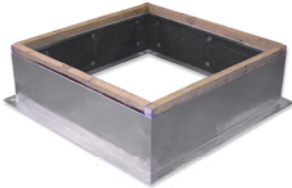




Cliplock 1000 Knockdown Curb Comparison



Welded Curb



**Cliplock 1000
Knockdown
Curb**

Advantages:

- Fully Assembled
- Internally Insulated

Disadvantages:

- Higher cost
- Bulky and expensive to ship
- Stocking requires an enormous amount of warehouse floor space

Advantages:

- Lower cost
- Compact and easy to ship
- Requires less warehouse floor space
- Assembles in 3—4 minutes

Disadvantages:

- None

Cliplock 1000 Roof Curb Review

Cliplock 1000 is the original Patented knockdown curb which assembles without the use of tools in 3 - 4 minutes

An 18" x 18" x 14" high Cliplock curb would package in a bundle size of 18" x 14" x 3 ½ " with a weight of 23lbs. Stocking this curb would enable you to put 144 curbs in a 48" x 48" x 96" high space in lieu of 32 of the welded version. Shipping cost would be substantially reduced, not to mention the initial cost savings .

Cliplock has been in the marketplace for some 15 years and is utilized by the major manufacturers of rooftop packaged equipment such as Lennox , Trane , Carrier , York , Armstrong and AAON to name a few .

Why spend more money to purchase , inventory & ship a welded curbs ? Offer your customer an inovative ,cost saving solution .

Welded curbs only save the Roofer \$\$\$\$\$.

The Cliplock 1000 Curb will save you money ,increase your sales and GP's.

Why not make the change !