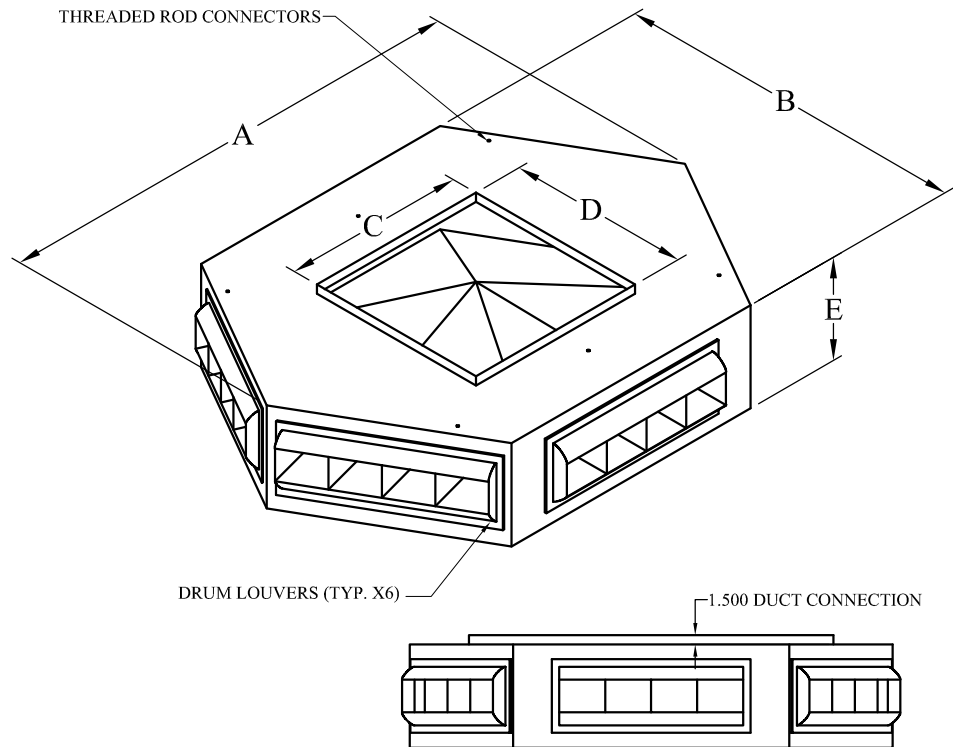
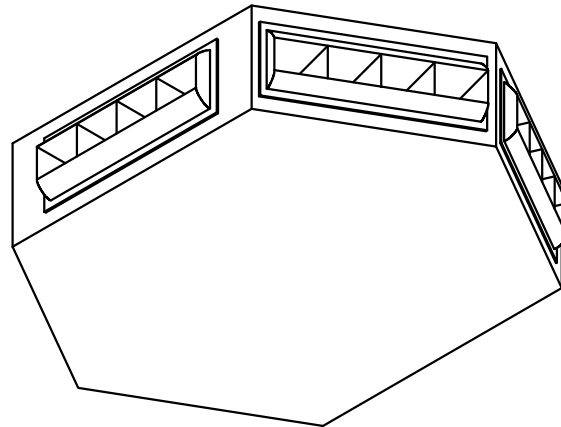




SPINNAKER 6 WAY SUPPLY DIFFUSER HEADS

FEATURES:

- HEAVY GAUGE STEEL
- 1" INTERNAL INSULATION
- 45DL1 DRUM LOUVERS (6)
- WHITE ENAMEL FINISH
- INTERNAL AIR DEFLECTOR



MODEL PART NUMBER	NOMINAL CFM (TONNAGE)	DIMENSIONS					DRUM LOUVER SIZE
		A	B	C	D	E	
SPI198	1600	42	46	18	18	13	6 X 12
SPI197	2000	42	46	18	18	13	6 X 12
SPI196	3000	42	46	22	22	13	6 X 18
SPI188	4000	42	46	22	22	13	6 X 18
SPI195	5000	58	59	24	24	16	10 X 24
SPI189	6000	58	59	28	28	16	10 X 24
SPI177	8000	81	70.25	40	40	18	12 X 30
	10000						
SPI194	12000	103	86	24	50	16	10 X 42
SPI176	17500	90.25	90.25	44	60	21	15 X 36

REF DRWG# DLDH-PDATA FOR PERFORMANCE DATA

SPI188
APR. 11 / 17