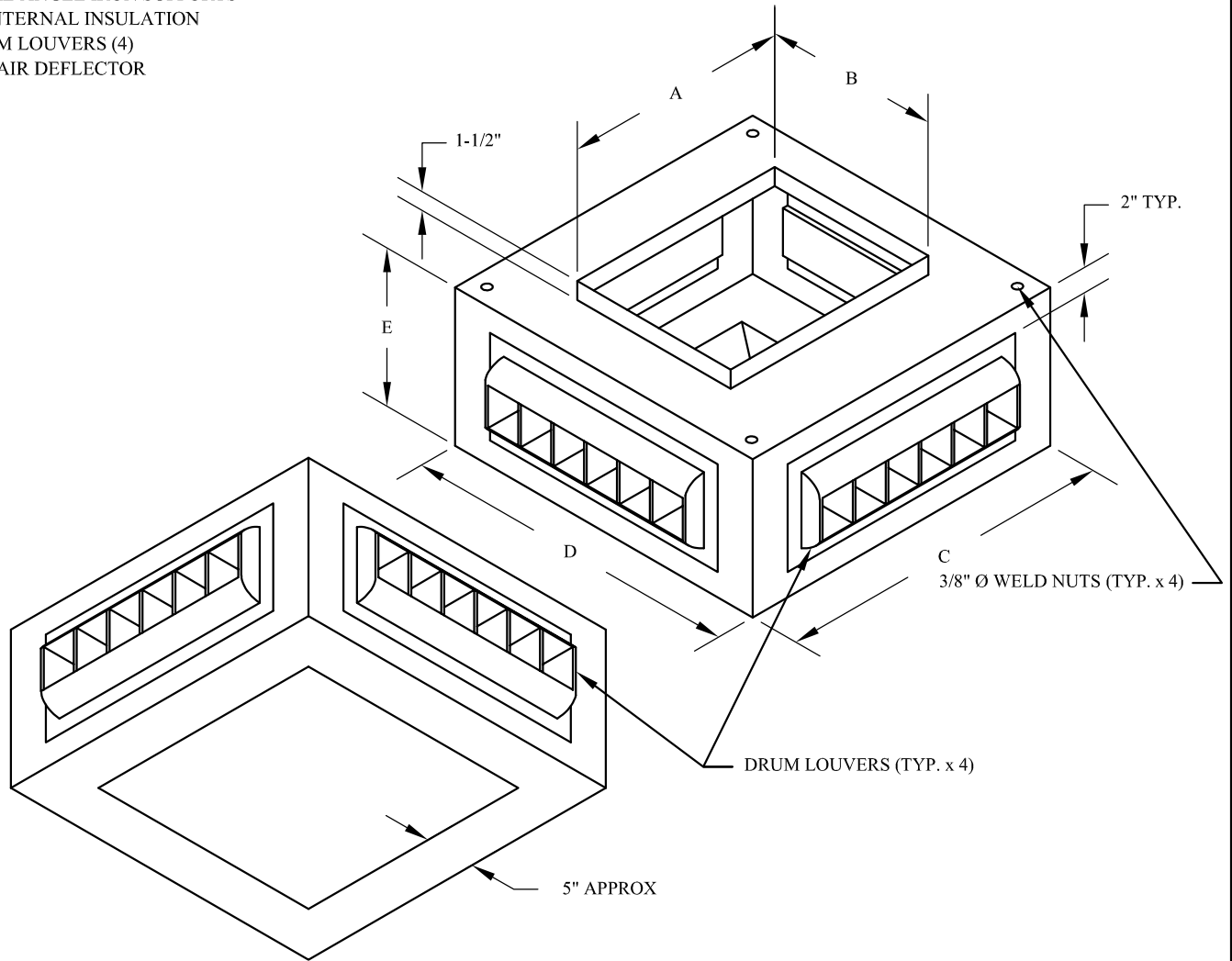




SPINNAKER 4 WAY SUPPLY AIR DIFFUSER HEADS

FEATURES:

- ONE PIECE FULLY ASSEMBLED CONSTRUCTION
- WHITE ENAMEL FINISH
- HEAVY GAUGE (18ga) STEEL CONSTRUCTION
- 1" INTERNAL ANGLE IRON SUPPORTS
- 1" THICK INTERNAL INSULATION
- 45DL1 DRUM LOUVERS (4)
- INTERNAL AIR DEFLECTOR



| MODEL PART NUMBER | TONNAGE | DIMENSIONAL DATA | | | | | DRUM LOUVER SIZE | CFM |
|-------------------|---------|------------------|---------|---------|---------|---------|------------------|-------|
| | | A | B | C | D | E | | |
| DLD 2000 | 5 | 18" | 14" | 27-1/8" | 27-1/8" | 12-1/2" | 18 X 6 | 2000 |
| DLD 3000 | 7.5 | 22" | 16" | 39-1/8" | 39-1/8" | 12-1/2" | 30 X 6 | 3000 |
| DLD 4000 | 10 | 22" | 20" | 51-1/8" | 51-1/8" | 12-1/2" | 42 X 6 | 4000 |
| DLD 5000 | 12.5 | 24" | 18" | 57-1/8" | 57-1/8" | 12-1/2" | 48 X 6 | 5000 |
| DLD 6000 | 15 | 14-1/4" | 35-7/8" | 45-1/8" | 45-1/8" | 16-1/8" | 36 X 10 | 6000 |
| DLD 8000 | 20 | 24-1/4" | 44" | 57-1/8" | 57-1/8" | 16-1/8" | 48 X 10 | 8000 |
| DLD 10000 | 25 | 20" | 48" | 57-1/8" | 57-1/8" | 18-1/8" | 48 X 12 | 10000 |
| DLD 12000 | 30 | 24" | 48" | 57-1/8" | 57-1/8" | 21-1/8" | 48 X 15 | 12000 |
| DLD 16000 | 40 | 32" | 48" | 70" | 70" | 24" | 60 X 15 | 16000 |
| DLD 20000 | 50 | 32" | 60" | 82" | 82" | 30" | 72 X 15 | 20000 |

DLD2000
APR. 11 / 17

REF DRWG# DLDH-PDATA FOR PERFORMANCE DATA